

SUNSET





SUNSET

ABOUT

Designed for adventure and built for indulgence, SUNSET is a striking 35m Sunseeker now offering day charters for the first time. Originally launched in 2019 by the renowned Sunseeker UK yard, this sleek and powerful superyacht has been crafted for exhilarating cruising along Australia's stunning coastline.

With a bold, sporty profile and a meticulously designed interior finished in silver oak, SUNSET effortlessly blends sophistication with high-performance engineering. Accommodating 10-12 guests in five luxurious cabins, including a full-beam master suite, she offers an unparalleled charter experience.

SUNSET's talented and friendly crew ensures every moment on board is seamless, whether you're indulging in a jacuzzi soak on the sundeck, basking on the spacious sun lounges, or embracing the thrill of her signature Sunseeker sports performance.

Now available for exclusive private and corporate charters on the Gold Coast, Brisbane, and the Whitsundays, SUNSET invites you to experience the East Coast of Australia in ultimate style and comfort.

Your extraordinary escape begins here.

SUNSET

SPECIFICATIONS

YACHT

SUNSEEKER 116

YEAR BUILT

2019

LENGTH

35M

YACHT TYPE

MOTOR

CRUISING SPEED

12 Knots

CREW

5 plus wait staff for events.

CRUISING AREA

East Coast Queensland

CABINS

5

OVERNIGHT GUESTS

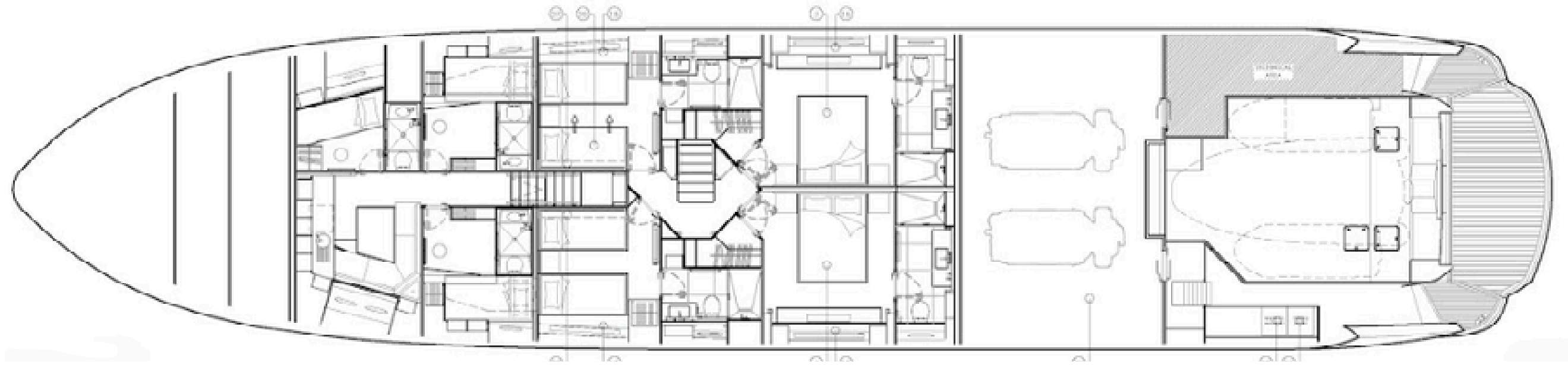
12

DAY GUESTS

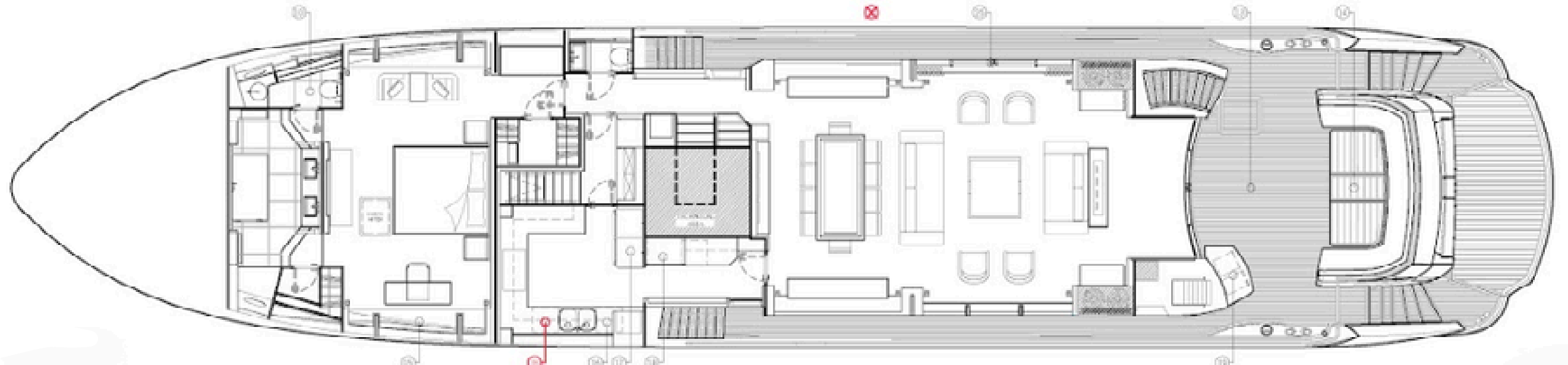
33



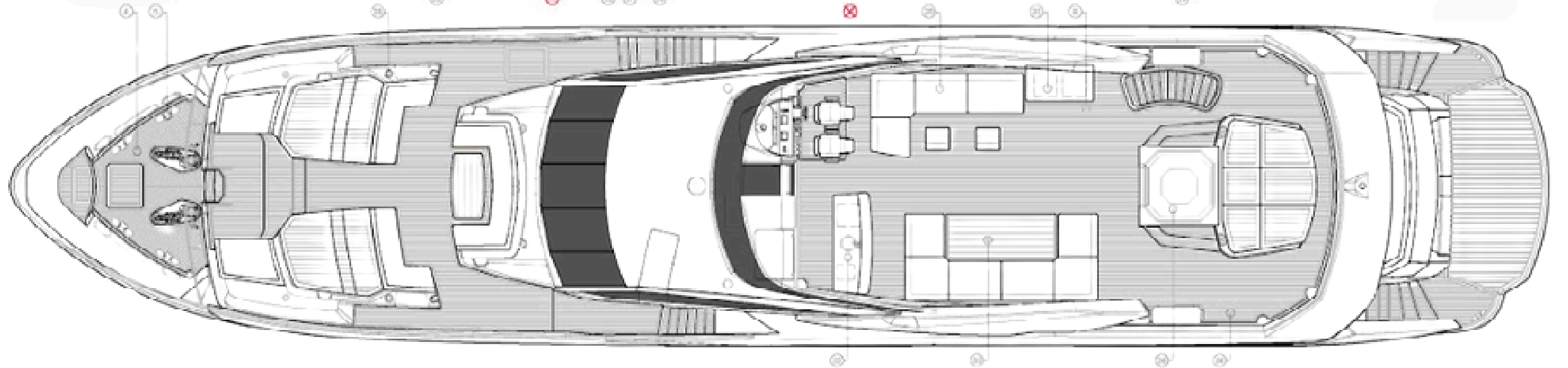
LOWER DECK



MAIN DECK



FLYBRIDGE



Day Charter Rates | Gold Coast

Charter Type	Price INCL. GST
Hourly Rate (minimum 3 hours)	\$3,500
Half Day Rate (4 hour)	\$14,000
Full Day Rate (6 hours)*	\$18,000
Additional Hours after 6	\$3,000
Brisbane Relocation (minimum 4 hours)	\$3,000
Tangalooma Relocation Charge (minimum 4 hours)	\$3,000

Watersports

(included in all 6 hour + charters)

- 2 x New F5 Seabobs
- 2 x New Seadoo Spark Jetskis
- Sea biscuit & tow toys
- 5.6 m LTN 57 Jet tender
- 1 x Jetsurf surfboard
- Inflatable swimming pool & platform
- Snorkeling gear

Inclusions:

- Charter includes vessel hire, 5 professional crew, Southport Yacht Club pick up, fuel, non-alcoholic beverages, snorkelling equipment, paddleboards

Additional:

- Additional waitstaff required for numbers over 12 (33 maximum guests, 3 wait staff required charged at \$400 per additional staff)
- Catering and beverage packages required per person
- Motorised watersports package available for an additional \$1,000 for any charters under 6 hours, including Jet Surf Board, E Foil Board, Jet Skis and Sea Scooters

Day Charter Rates | Whitsundays

Charter Type	Price INCL. GST
Hourly Rate (minimum 3 hours)	\$3,500
Half Day Rate (4 hour)	\$14,000
Full Day Rate (6 hours)*	\$18,000
Additional Hours after 6	\$3,000
Hamilton Island Relocation Charge	\$3,000
Hayman Island Relocation Charge	\$3,000

Inclusions:

- Charter includes vessel hire, 5 professional crew, Coral Sea Marina (Airlie Beach) pick up, fuel, non-alcoholic beverages, snorkelling equipment, paddleboards

Additional:

- Hamilton Island or Hayman Island Marina relocation & entry charge (case by case scenario for permission to enter marina's)
- Additional waitstaff required for numbers over 12 (33 maximum guests, 3 wait staff required charged at \$400 per additional staff)
- Catering and beverage packages required per person
- Motorised watersports package available for an additional \$1,000 for any charters under 6 hours, including Jet Surf Board, E Foil Board, Jet Skis and Sea Scooters

Watersports

(included in all 6 hour + charters)

- 2 x New F5 Seabobs
- 2 x New Seadoo Spark Jetskis
- Sea biscuit & tow toys
- 5.6 m LTN 57 Jet tender
- 1 x Jetsurf surfboard
- Inflatable swimming pool & platform
- Snorkeling gear

Liveaboard Charter Rates*

Charter Type	Price INCL. GST (APA additional)
Overnight rate (24 hours)	\$25,000+
3 Night Package	\$75,000+
4 Night Package	\$90,000
5 Night Package	\$110,000
Additional Nights	\$20,000
Relocation Charge	\$3,000

Rate Information:

- +30% APA applicable for all charters
- Minimum 3-night charter (preferred)
- Public holiday surcharges apply (20%)

Inclusions

- Rates are for 10 guests (12 with children or adults upon approval)
- Airlie Beach/ Gold Coast (Coral Sea Marina/ Southport) pick up
- Private use of Sunset with 5 professional crew
- Fuel (3 hours of cruising per day)
- Environmental marine charges, Queensland Parks and Wildlife charges
- Vessel caters to 10 guests overnight in 5 staterooms. Up to 12 guests comfortably if children (Pullmans). Additional charges for 12 adults
- Each stateroom is equipped with deluxe amenities, hair dryers, bathrobes and slippers
- Motorised and non-motorised watersports including Jet Surf Board, E-Foil Board, Set Ski’s and Sea bobs, paddle boards, sea biscuits, snorkelling equipment

GALLERY

